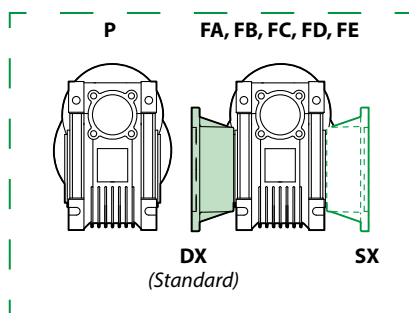


Designazione / Designation

RIDUTTORE A VITE SENZA FINE CON PRECOPPIA / HELICAL WORM GEARBOXES							ACCESSORI / ACCESSORIES			
Riduttore Gearbox	Grandezza precoppia Size pre-stage	Grandezza riduttore Size gearbox	Versione riduttore Gearbox Version	Posizione flangia uscita Position Output flange	Rapporto rid. = i Ratio = i	Predispos. attacco motore Motor coupling	Forma costruttiva Version	Posizione di montaggio Mounting position	Albero uscita Output shaft	Braccio di reazione Torque arm
VR	063/040	P	-	R73.5	63 B5	U	AD	BR		
	063/040 063/050 071/050 071/063 071/075 080/075 080/090 080/110 090/090 090/110 090/130	P FA FB FC FD FE	- DX SX	R61.2 R73.5 R75 R88.2 R90 R98 R117.5 R120 R122.5 R147 R150 R176.4 R180 R235.2 R240 R294 R300 (1)	63 71 80 90	B5	U* B3 B6 B7 B8 V5 V6	AS  AD 	BR 	

Versione riduttore / Gearbox version

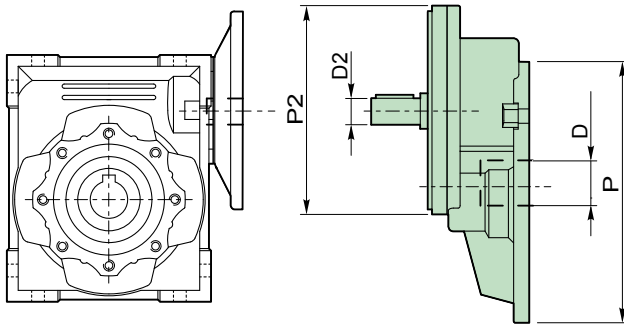


(1) Rapporti di riduzione reali del kit precoppia, consultare tab. p.20

\* Dalla gr. 25 alla 63, i riduttori sono forniti in posizione U = Universale

(1) Actual reduction ratios, see table p.20

\* From size 25 to 63, the gearboxes are supplied in position U = Universal

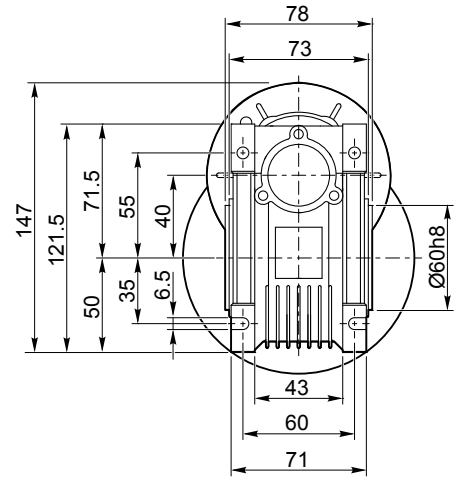
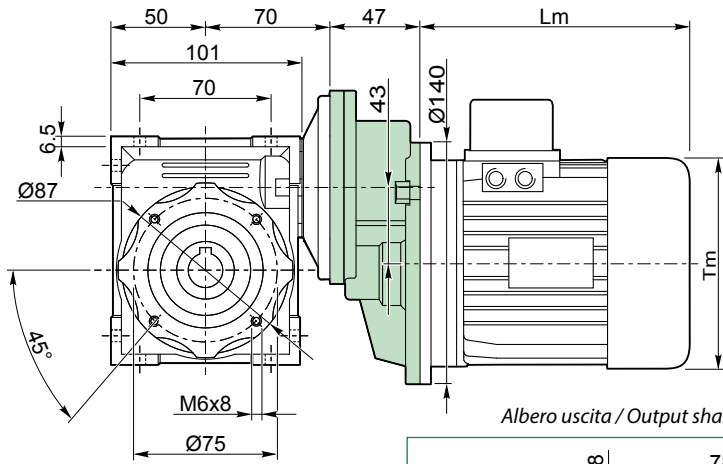
**Predisposizioni IEC / IEC Pre-arrangements**


IEC: P / D

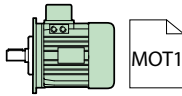
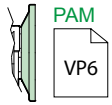
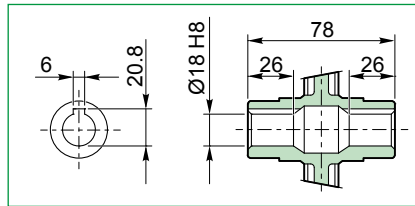
VR	CODICE / CODE	P	D	P2	D2
063/040 063/050	PR063A11	140	11	105	11
	PR063A14	140	11	105	14
071/050 071/063 071/075	PR071A14	160	14	120	14
	PR071A19	160	14	120	19
080/075 080/090 080/110	PR080A19	200	19	160	19
	PR080A24	200	19	160	24
090/090 090/110 090/130	PR090A24	200	24	160	24
	PR090A28	200	24	160	28

i = R1 x R2		Grandezza precoppia / Size pre-stage			
Grandezza riduttore Size gearbox	R2	063	071	080	090
		IEC 140 / 11	IEC 160 / 14	IEC 200 / 19	IEC 200 / 24
		R1 = 2.94	R1 = 2.94	R1 = 3	R1 = 2.45
VR ... / 040	25	i = 73.5			
	30	i = 88.2			
	40	i = 117.6			
	50	i = 147			
	60	i = 176.4			
	80	i = 235.2			
	100	i = 294			
VR ... / 050	25		i = 73.5		
	30		i = 88.2		
	40	i = 117.6	i = 117.6		
	50	i = 147	i = 147		
	60	i = 176.4	i = 176.4		
	80	i = 235.2	i = 235.2		
	100	i = 294			
VR ... / 063	25				
	30				
	40		i = 117.6		
	50		i = 147		
	60		i = 176.4		
	80		i = 235.2		
	100		i = 294		
VR ... / 075	25			i = 75	
	30			i = 90	
	40			i = 120	
	50		i = 147	i = 150	
	60		i = 176.4	i = 180	
	80		i = 235.2	i = 240	
	100		i = 294	i = 300	
VR ... / 090	25				i = 61.2
	30				i = 73.5
	40			i = 120	i = 98
	50			i = 150	i = 122.5
	60			i = 180	i = 147
	80			i = 240	
	100			i = 300	
VR ... / 110	25				i = 61.2
	30				i = 73.5
	40				i = 98
	50				i = 122.5
	60				i = 147
	80			i = 240	i = 196
	100			i = 300	i = 245
VR ... / 130	25				
	30				
	40				
	50				
	60				
	80				i = 196
	100				i = 245

**VR 063 / 040 P...**

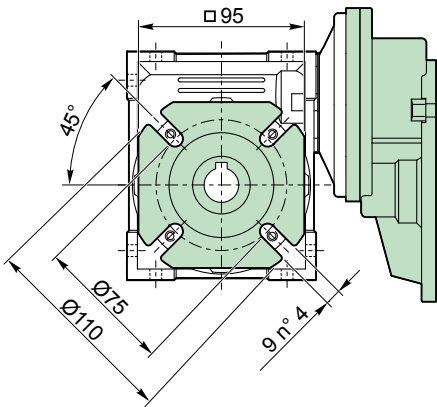


Albero uscita / Output shaft

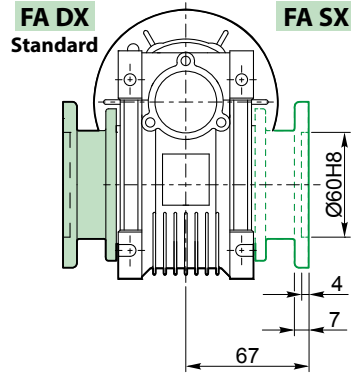


**Kg**  
3.8 kg

**VR 063 / 040 F...**

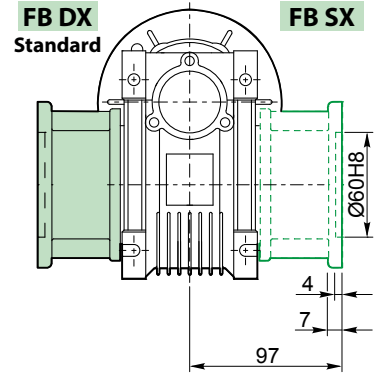


**FA DX**  
Standard

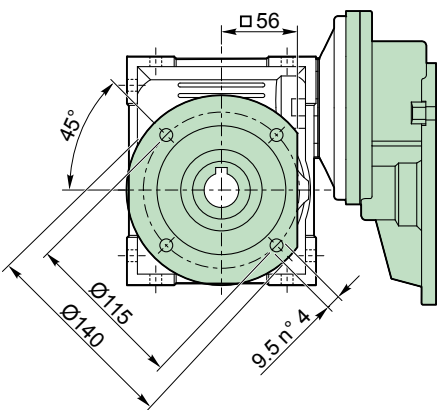


**FA SX**

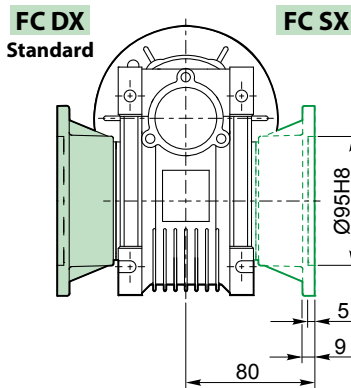
**FB DX**  
Standard



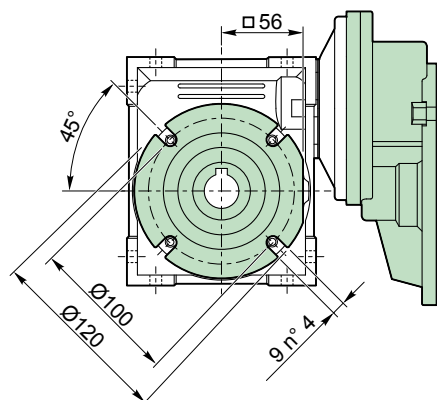
**FB SX**



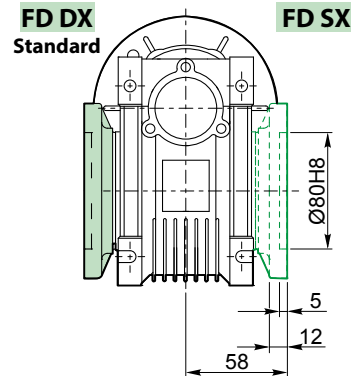
**FC DX**  
Standard



**FC SX**

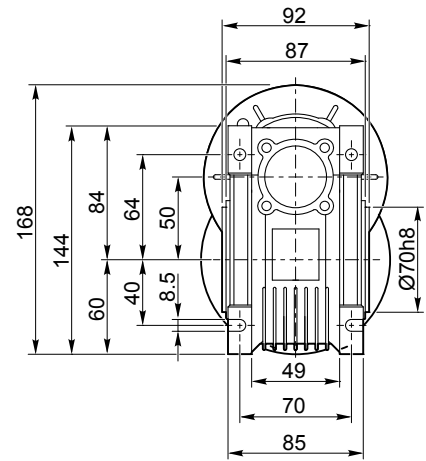
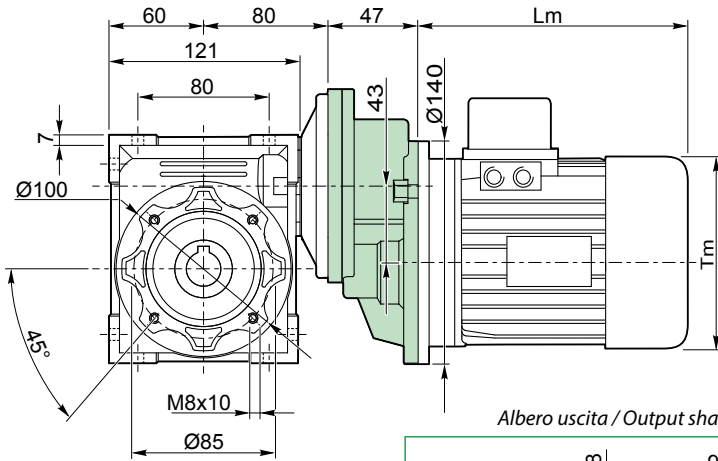


**FD DX**  
Standard

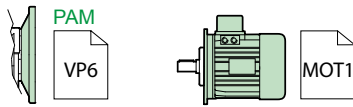
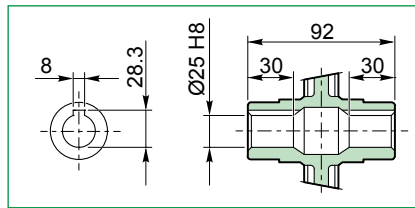


**FD SX**

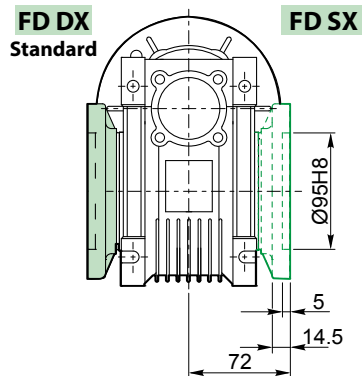
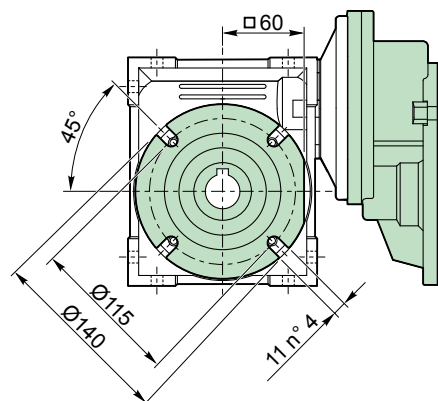
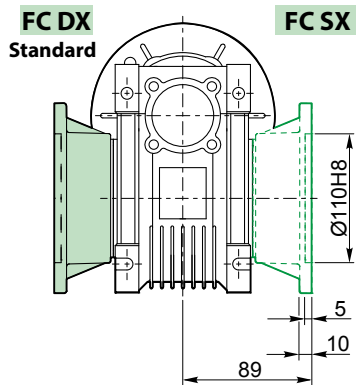
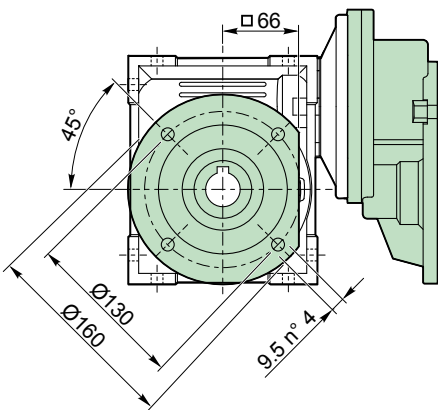
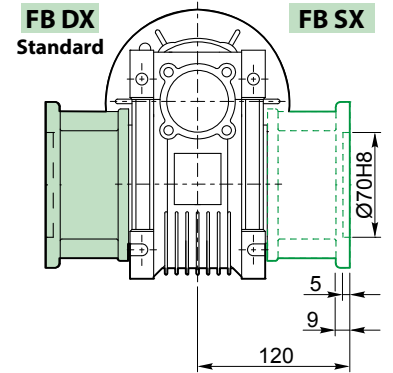
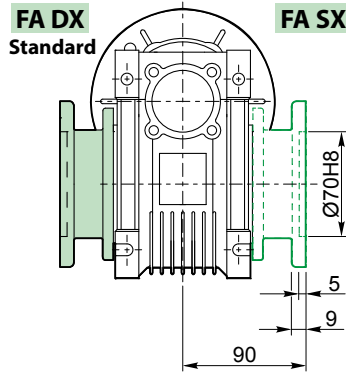
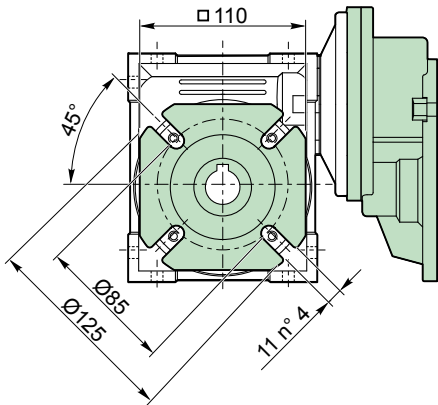
VR 063 / 050 P...



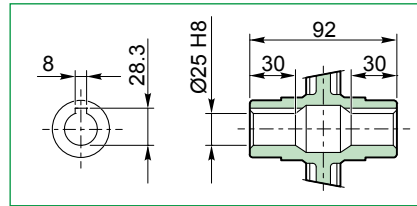
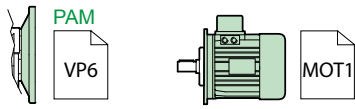
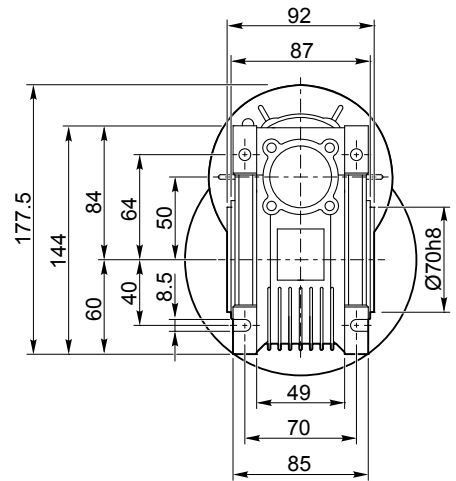
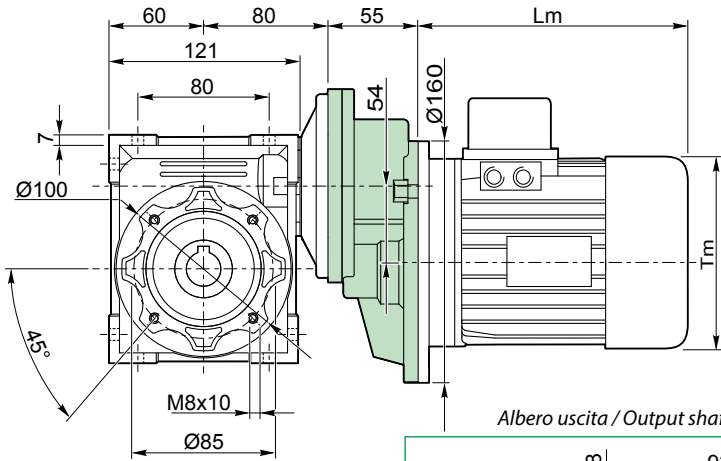
Albero uscita / Output shaft



VR 063 / 050 F...

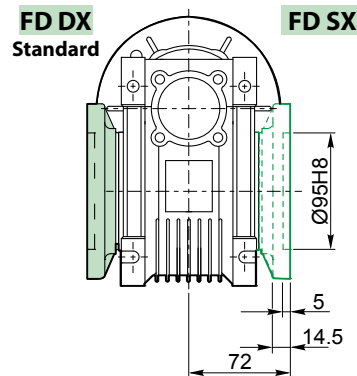
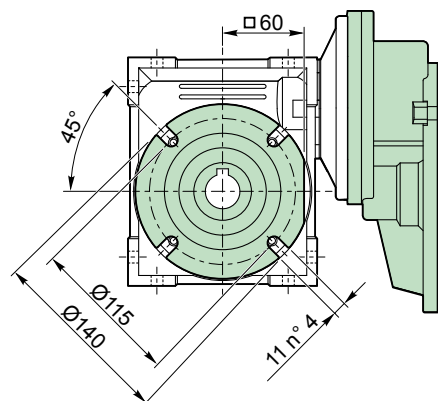
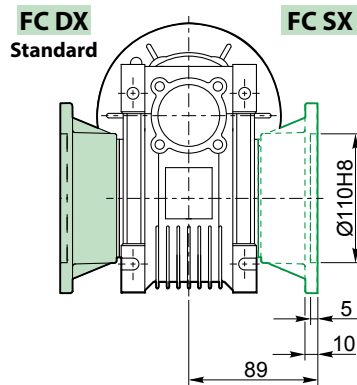
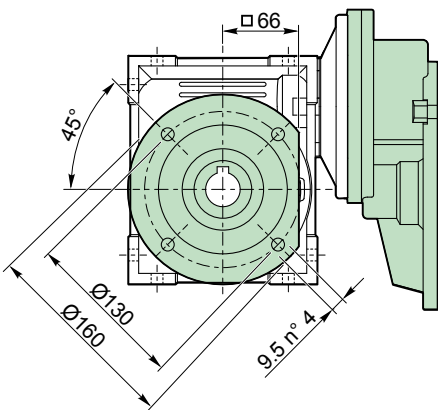
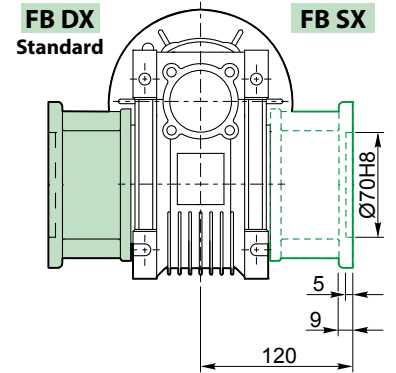
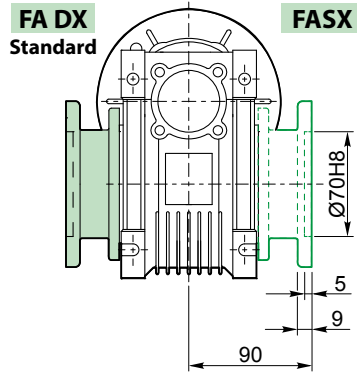
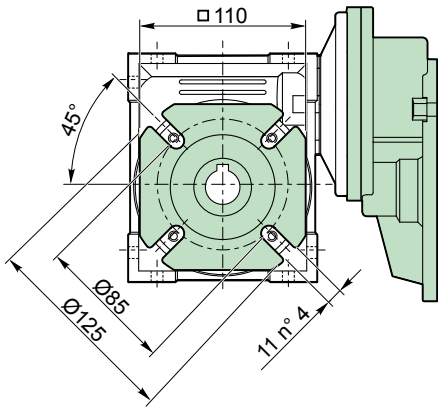


**VR 071 / 050 P...**

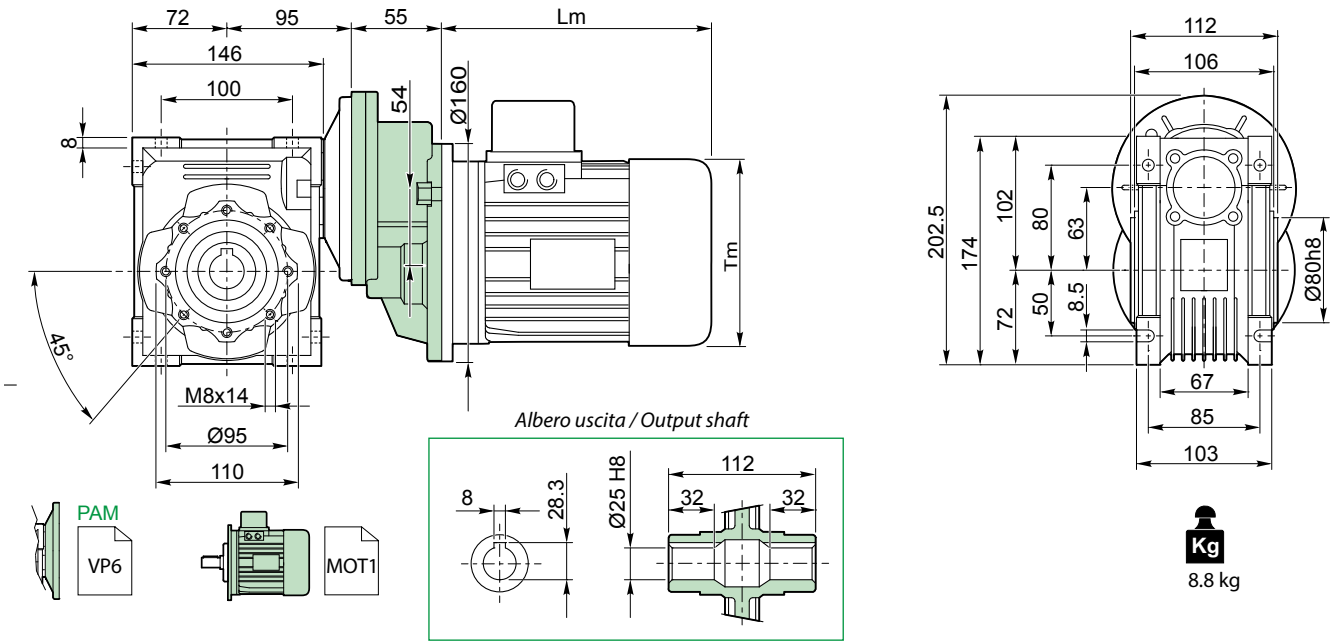


**Kg**  
6.1 kg

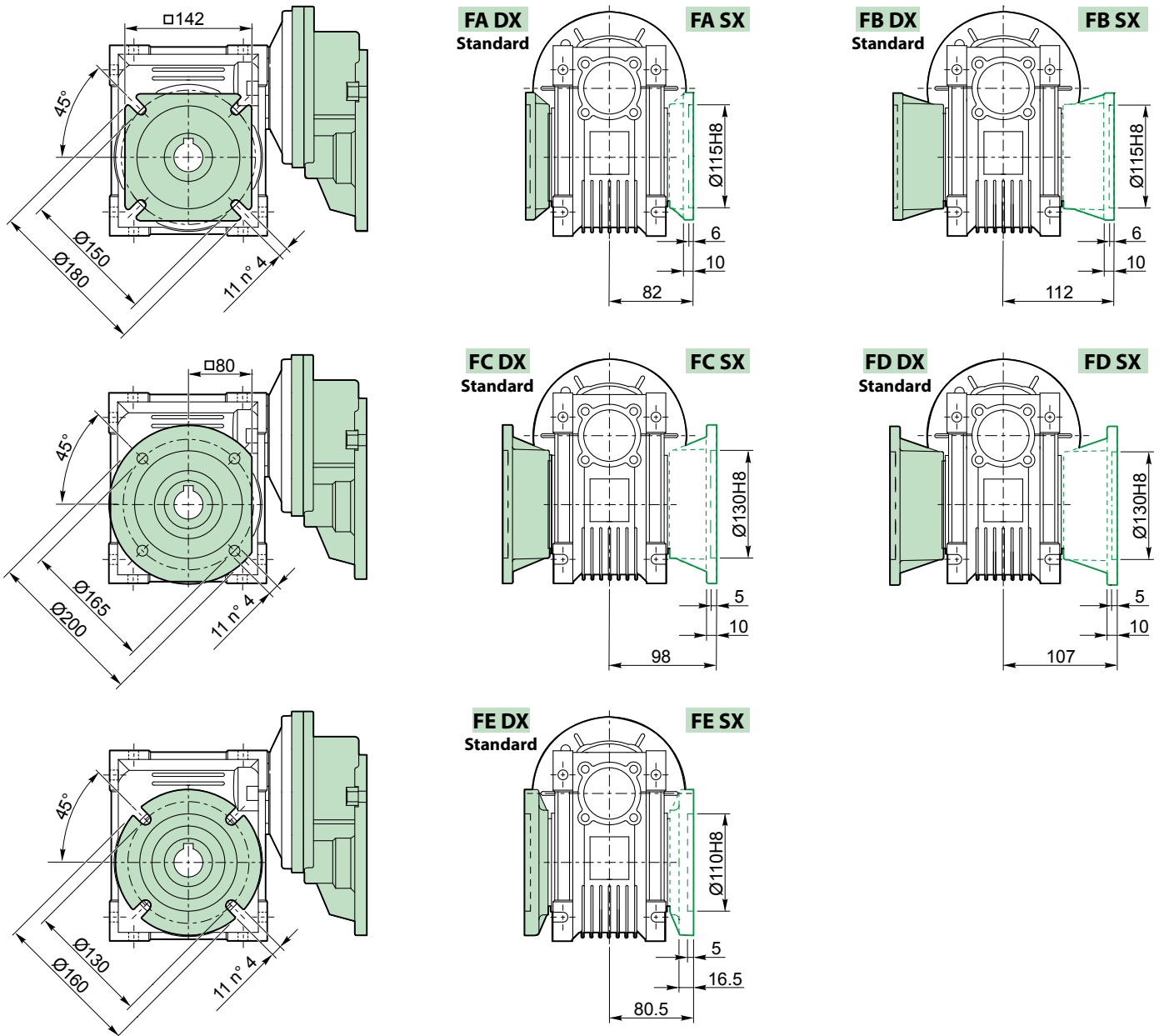
**VR 071 / 050 F...**



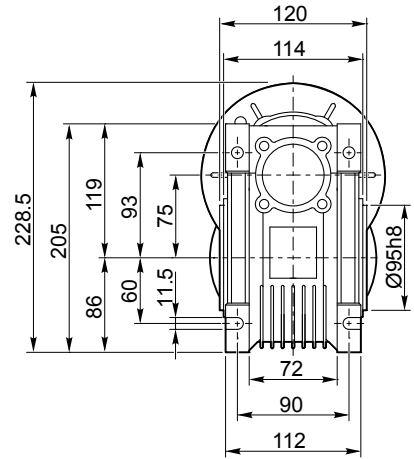
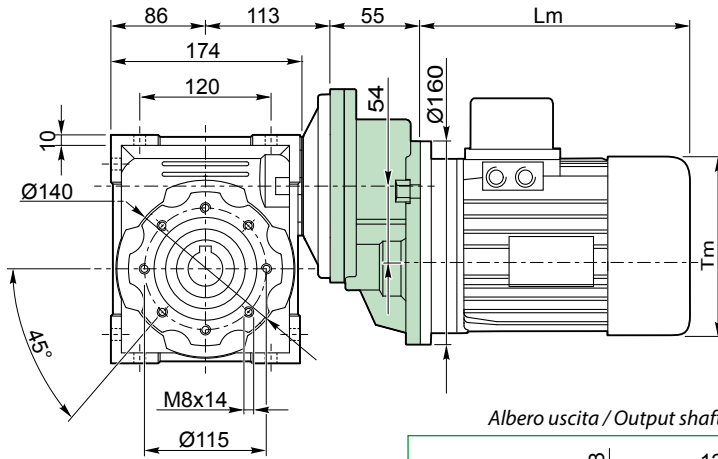
VR 071 / 063 P...



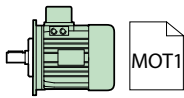
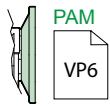
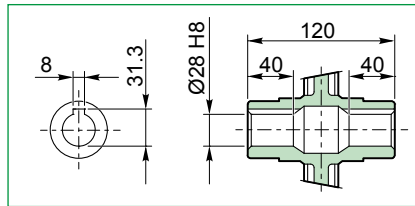
VR 071 / 063 F...



**VR 071/075 P...**

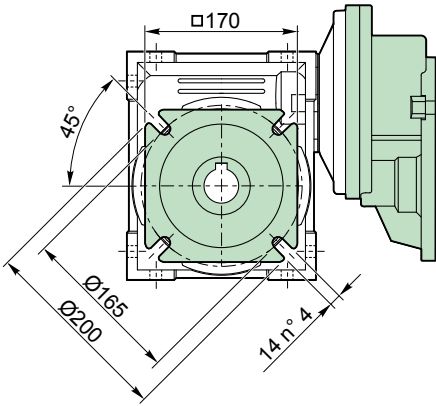


Albero uscita / Output shaft

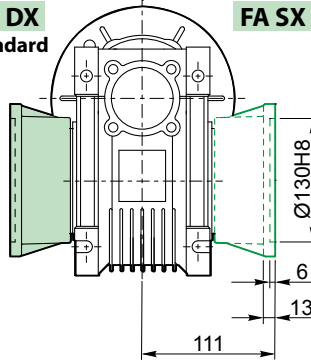


**Kg**  
11.6 kg

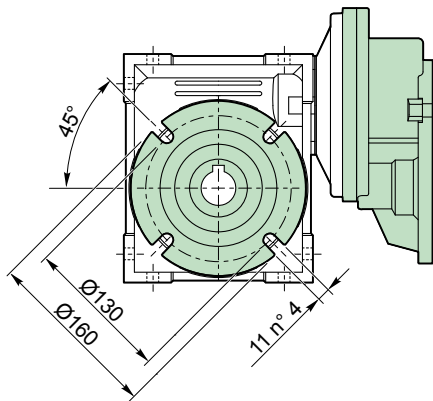
**VR 071 / 075 F...**



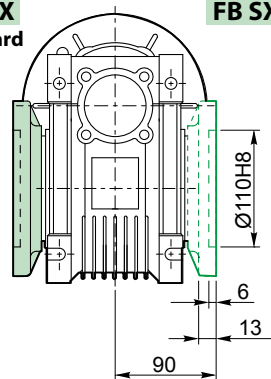
**FA DX**  
Standard



**FA SX**

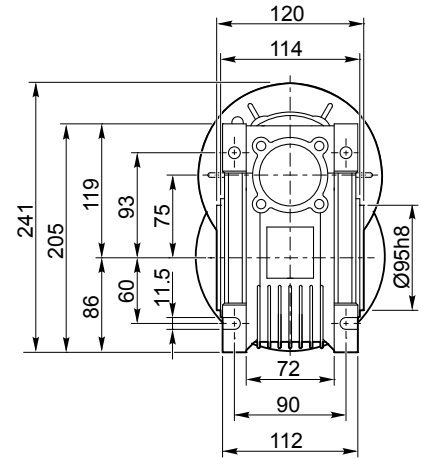
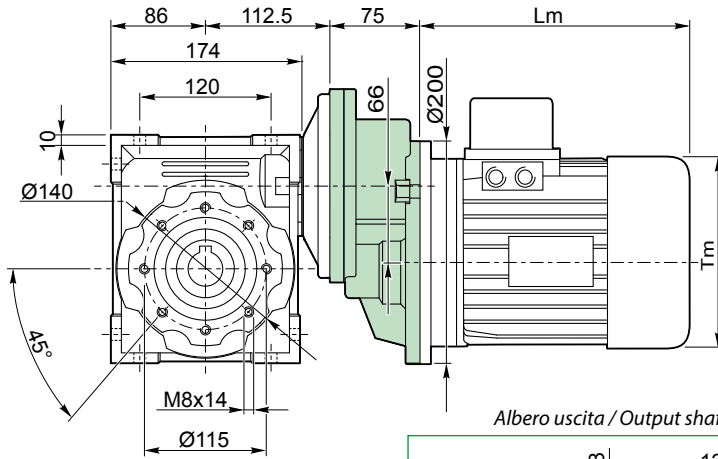


**FB DX**  
Standard

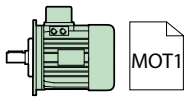
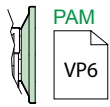
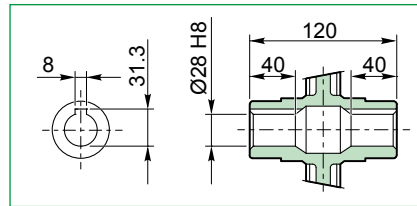


**FB SX**

VR 080 / 075 P...

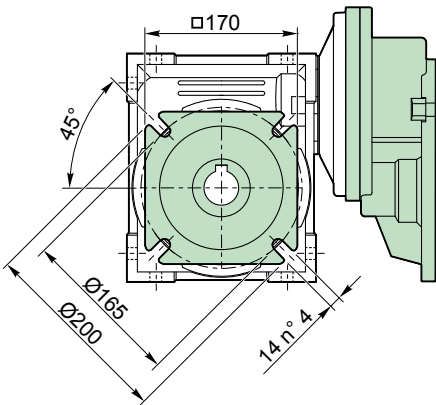


Albero uscita / Output shaft

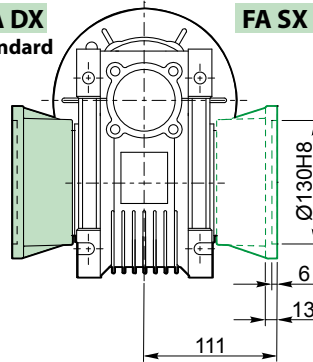


**Kg**  
13.7 kg

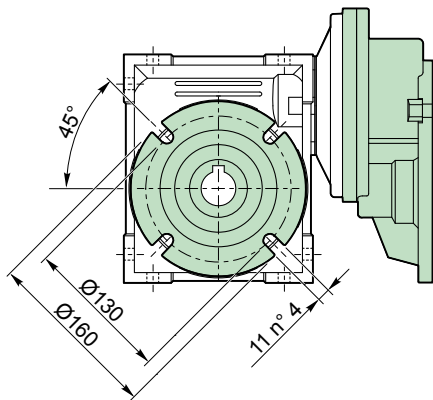
VR 080 / 075 F...



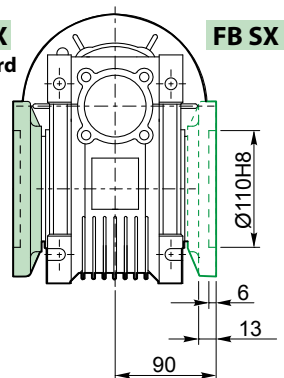
**FA DX**  
Standard



**FA SX**



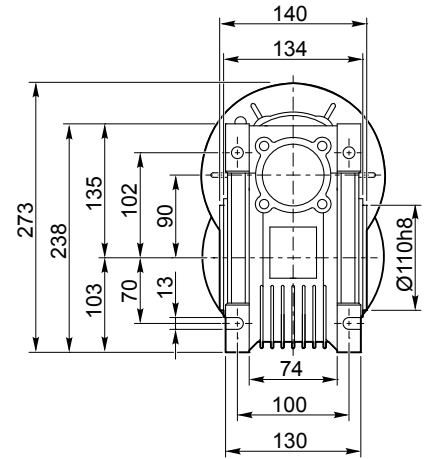
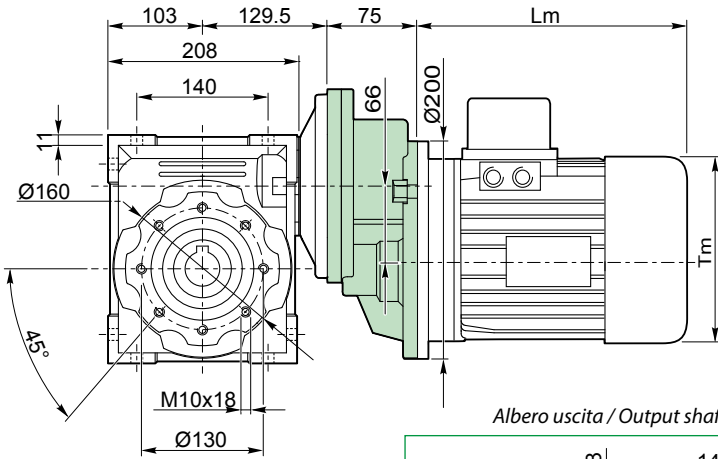
**FB DX**  
Standard



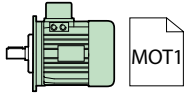
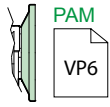
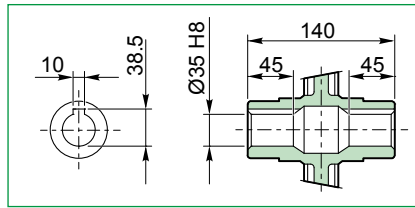
**FB SX**



## VR 080 / 090 P...

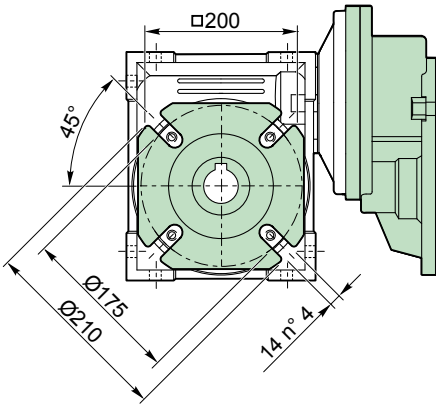


Albero uscita / Output shaft

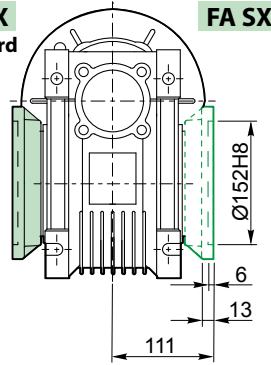


**Kg**  
17.7 kg

## VR 080 / 090 F...

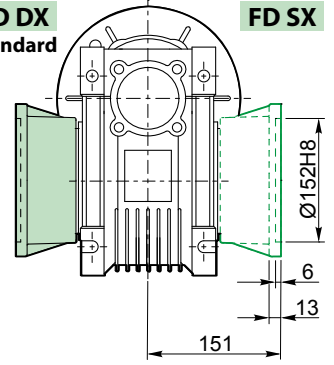


**FA DX**  
Standard

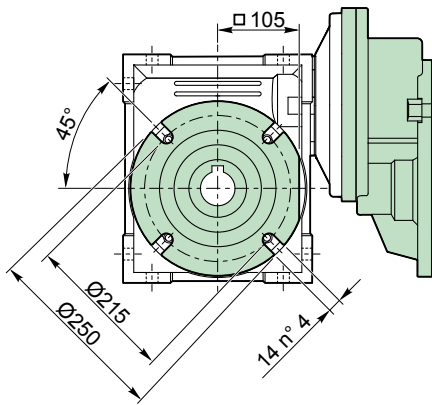


**FA SX**

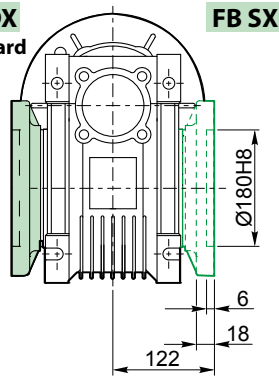
**FD DX**  
Standard



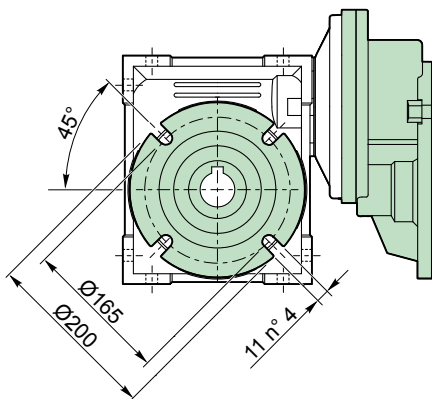
**FD SX**



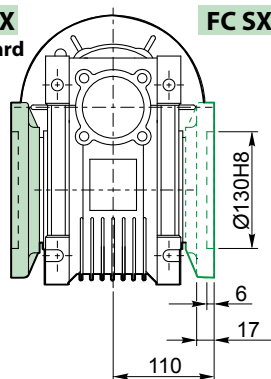
**FB DX**  
Standard



**FB SX**

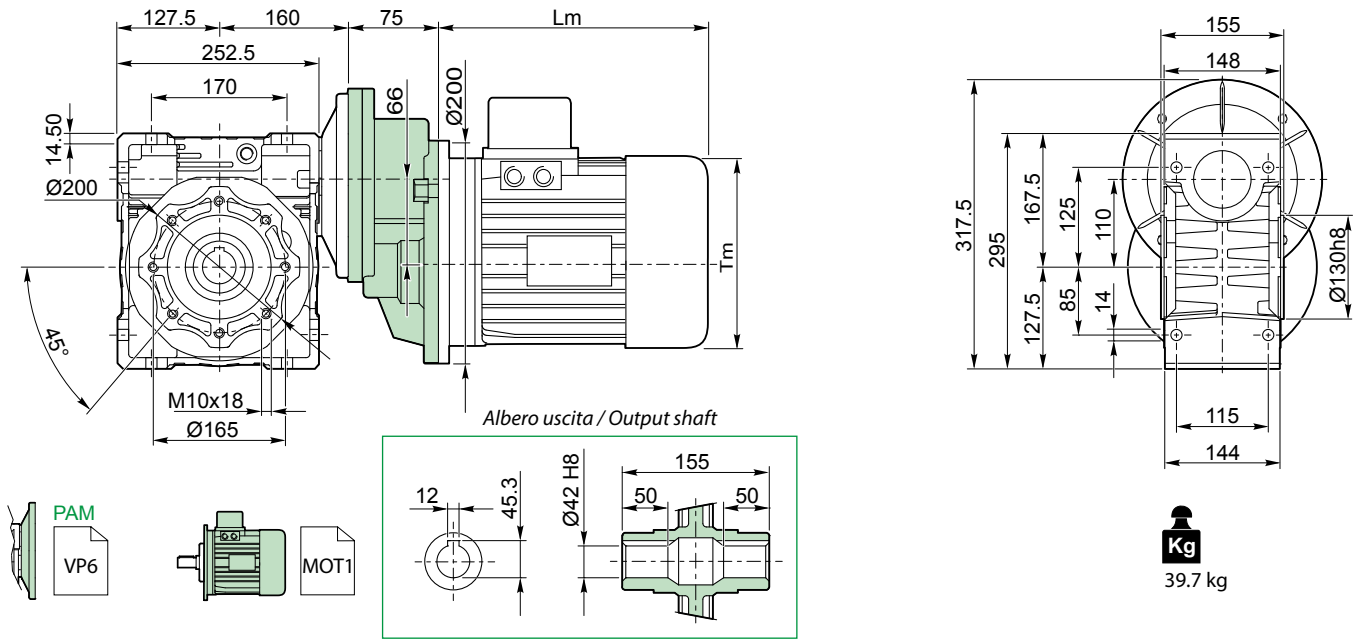


**FC DX**  
Standard

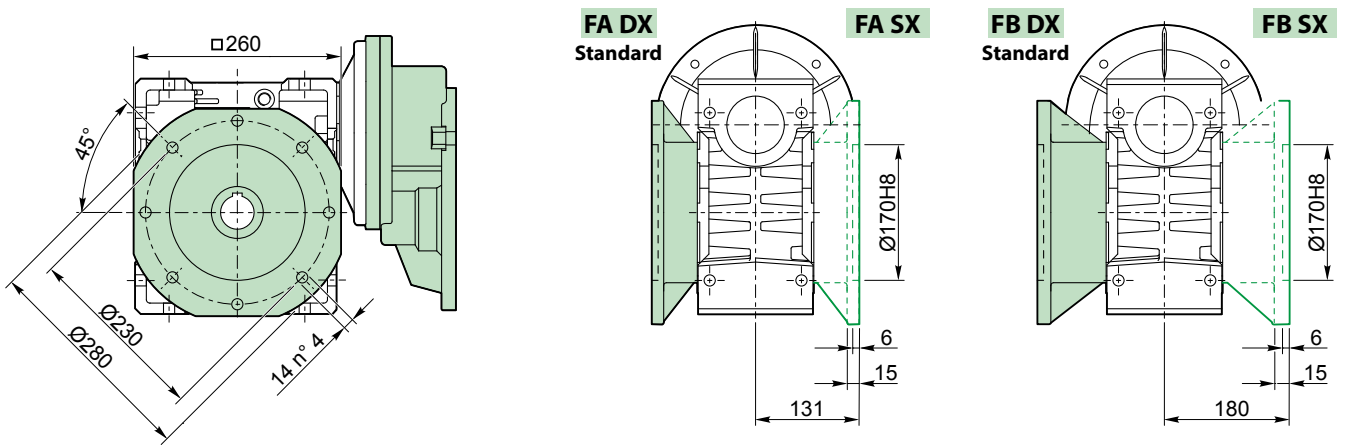


**FC SX**

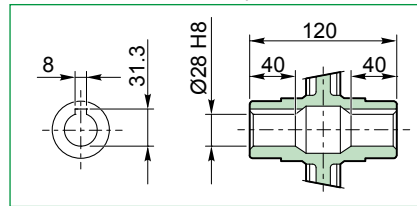
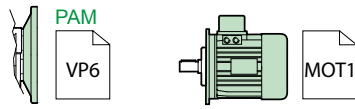
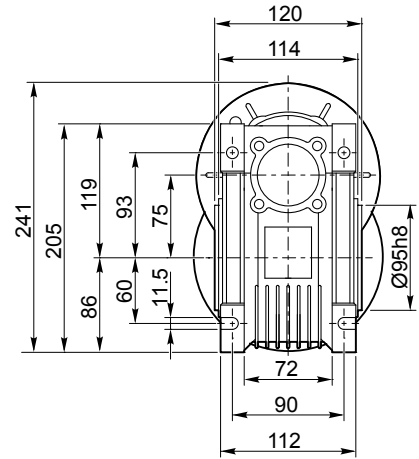
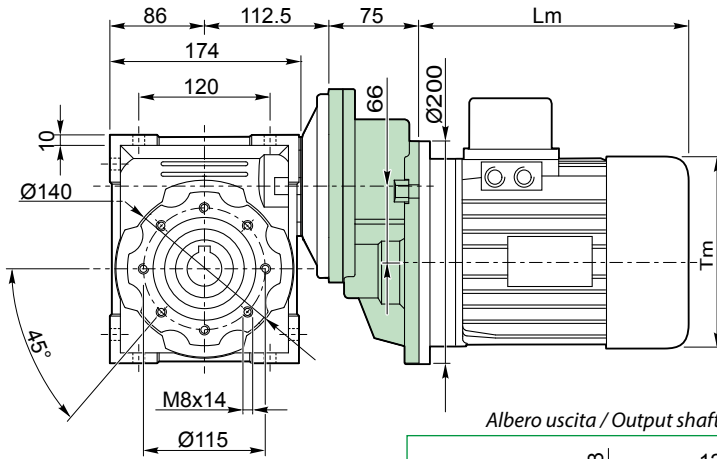
VR 080 / 110 P...



VR 080 / 110 F...

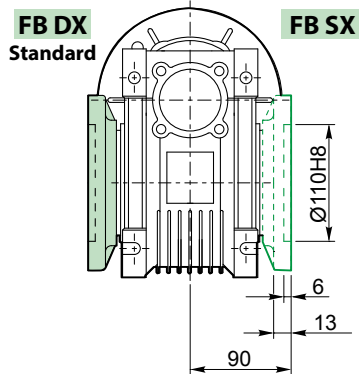
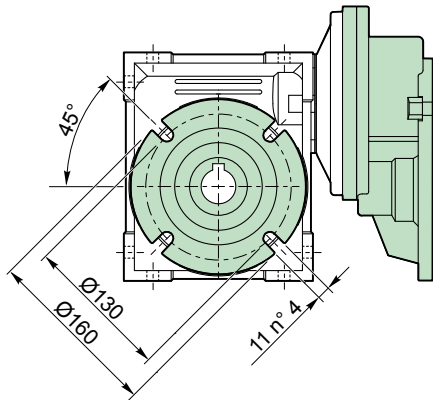
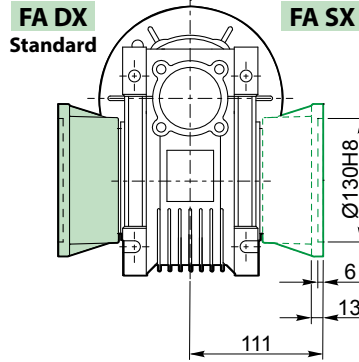
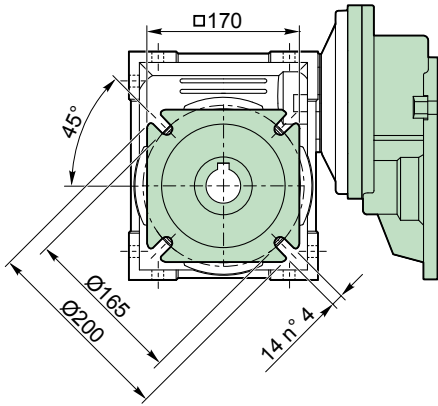


**VR 090 / 075 P...**

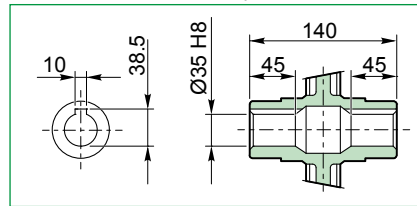
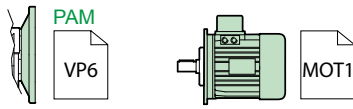
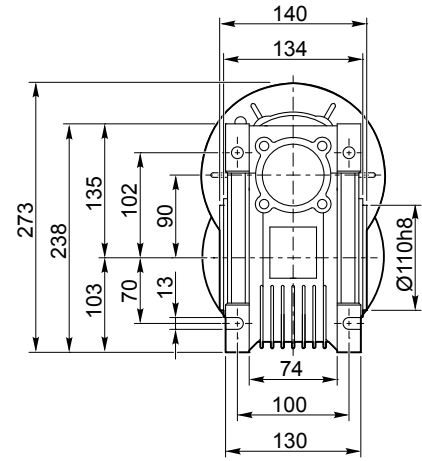
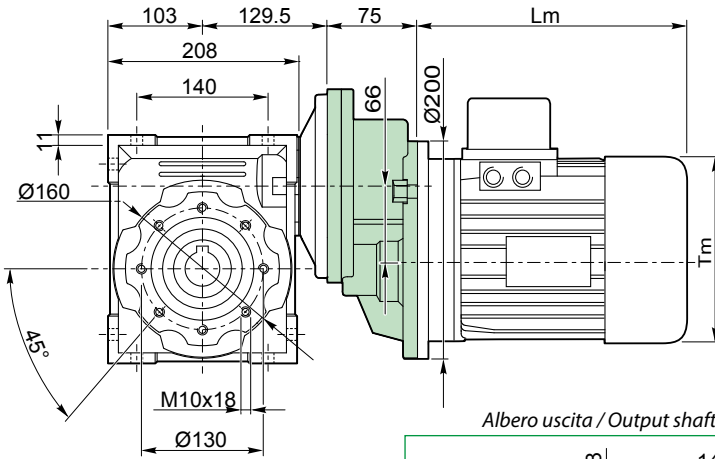


**Kg**  
13.7 kg

**VR 090 / 075 F...**

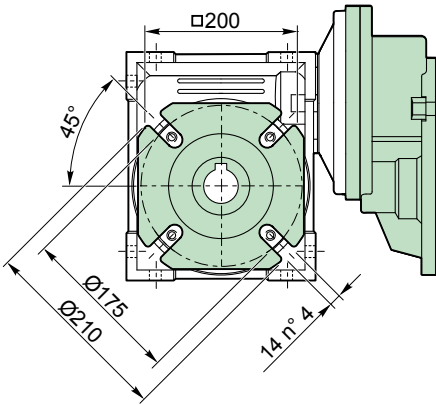


VR 090 / 090 P...

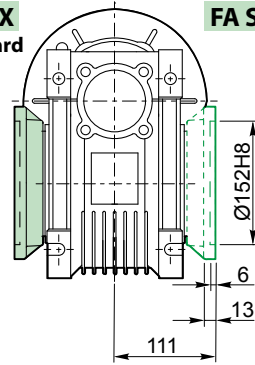


**Kg**  
17.7 kg

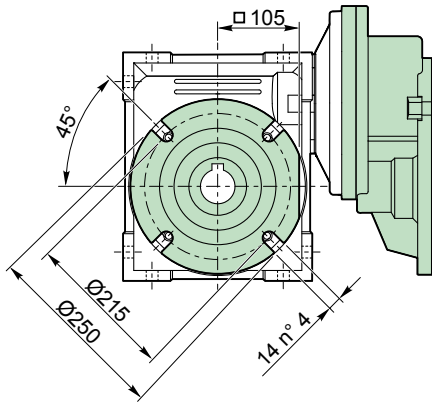
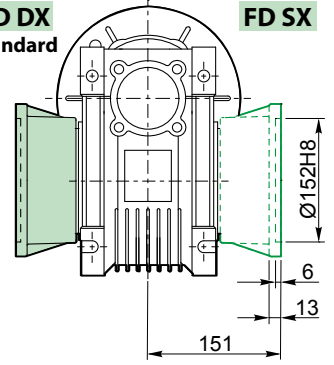
VR 090 / 090 F...



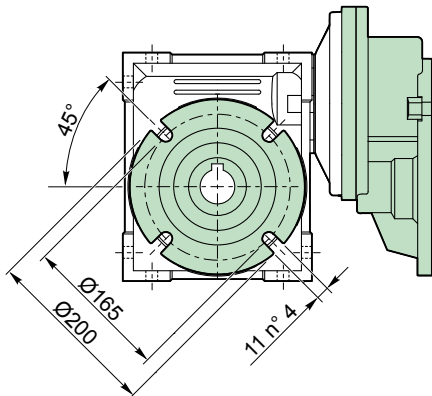
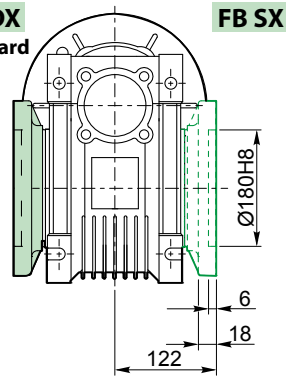
**FA DX**  
Standard



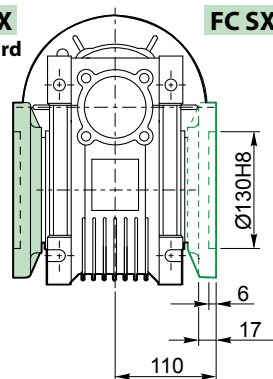
**FD DX**  
Standard



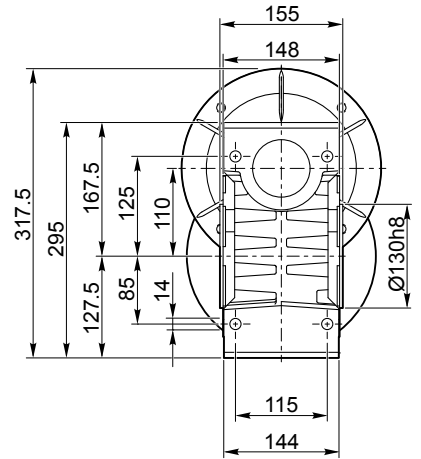
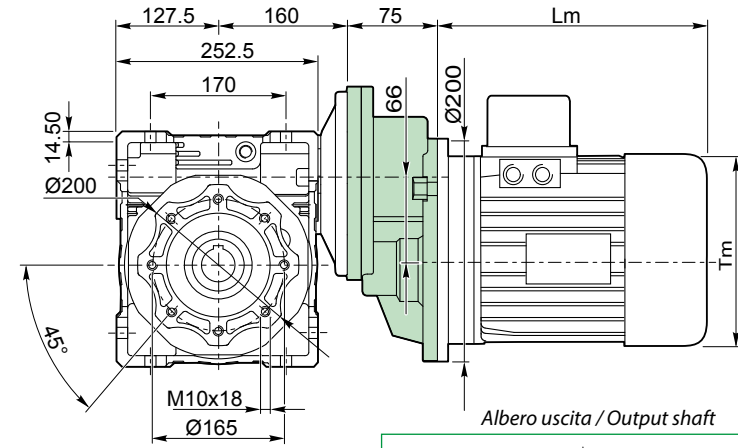
**FB DX**  
Standard



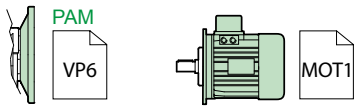
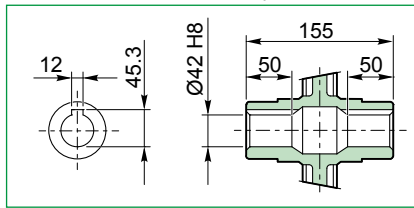
**FC DX**  
Standard



**VR 090 / 110 P...**

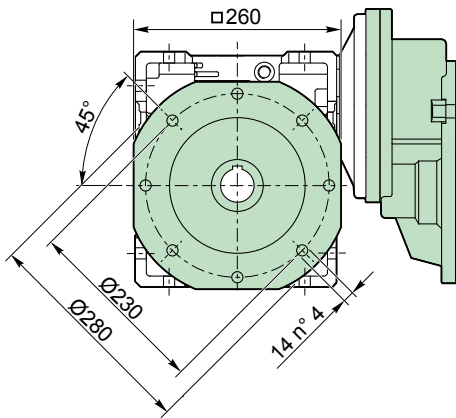


Albero uscita / Output shaft

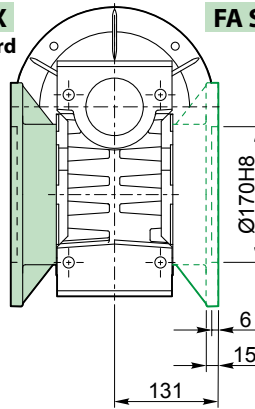


**Kg**  
39.7 kg

**VR 090 / 110 F...**

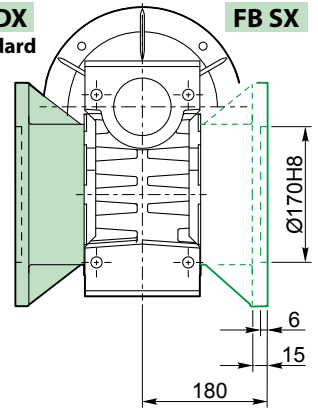


**FA DX**  
Standard



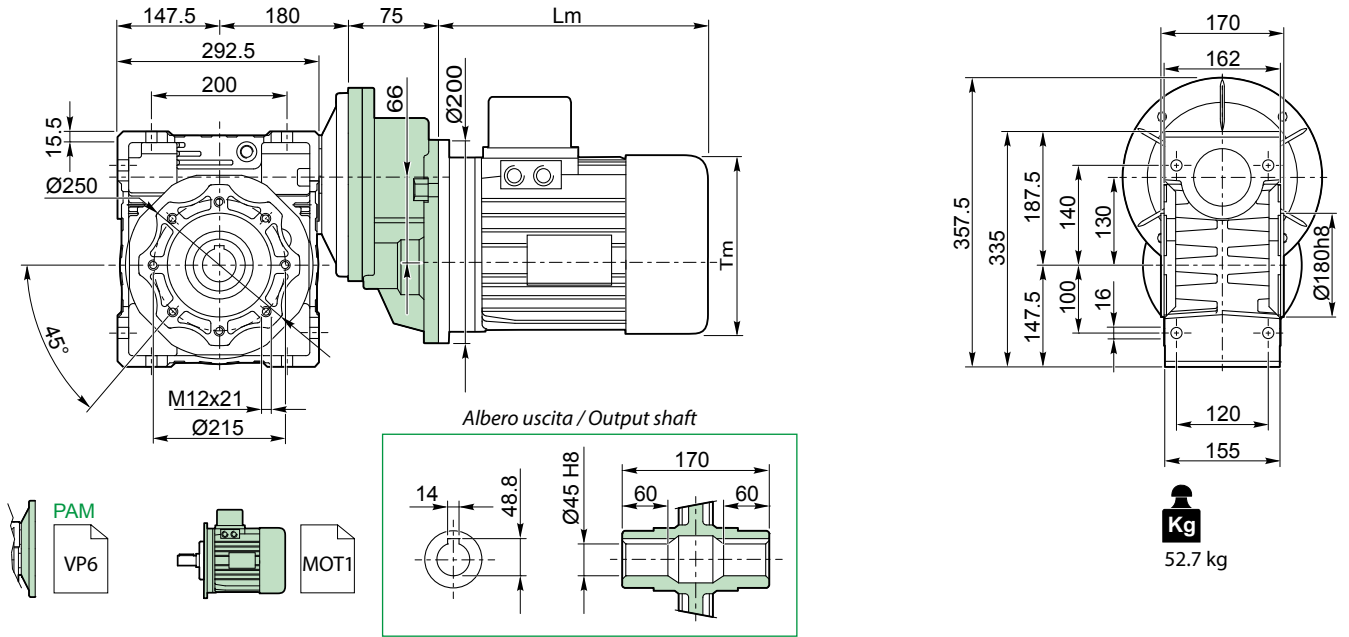
**FA SX**

**FB DX**  
Standard



**FB SX**

VR 090 / 130 P...



VR 090 / 130 F...

